

SPI Storm Studio

Software Installation Guide



Table of Contents

1Installing SPI Storm Studio.....	4
1.1System requirements.....	4
1.2Installation Wizard.....	4
1.3Installing the USB driver.....	7
1.3.1Default procedure.....	7
1.3.2Install driver manually.....	7
1.4Installing the License File.....	15

References

[]

History

Version	Date	Description
1.00	17 June 2011	Initial revision

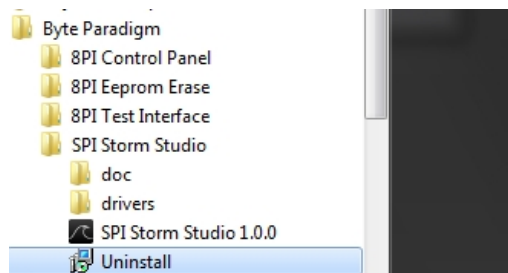
1 Installing SPI Storm Studio

1.1 System requirements

- PC installed with Microsoft Windows XP, Windows VISTA or Windows 7 - 32-bit or 64-bit versions.
- 20 MB of free space.
- One free USB 2.0 port.
- Microsoft .NET Framework 4 Client Profile runtime installed.

1.2 Installation Wizard

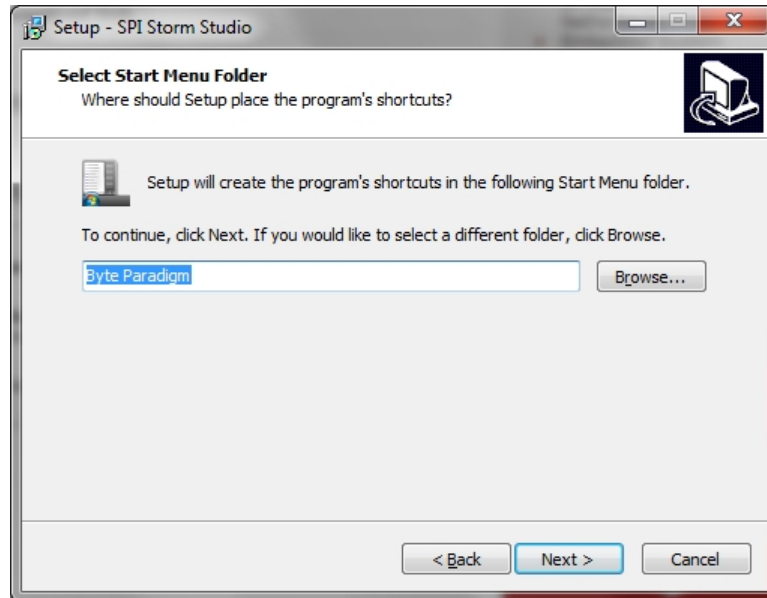
- Download SPI Storm Studio from <http://www.byteparadigm.com/download-16.html>
- If a previous version of SPI Storm Studio was installed, it is better to uninstall it. For this, go to Start Meny and located your SPI Storm Studio menu:



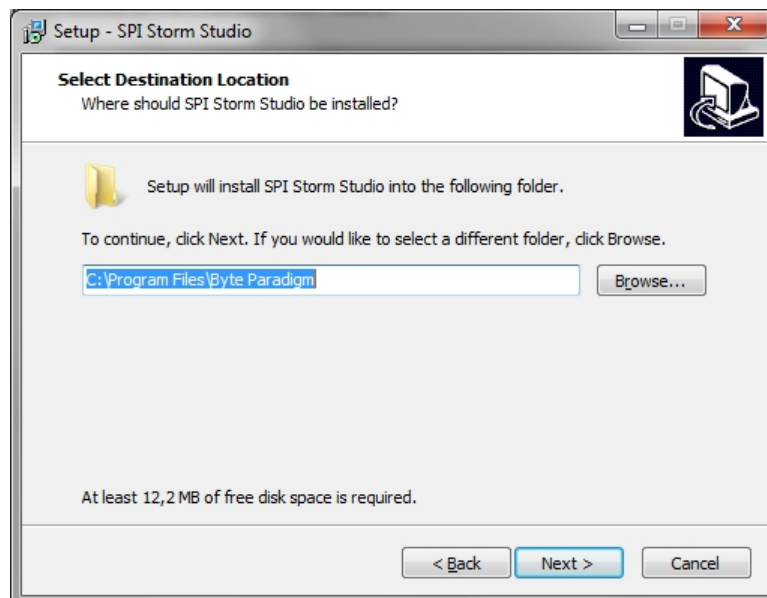
- Double-click on archive to start the installation wizard.
- At the wizard welcome screen, click on **Next>**



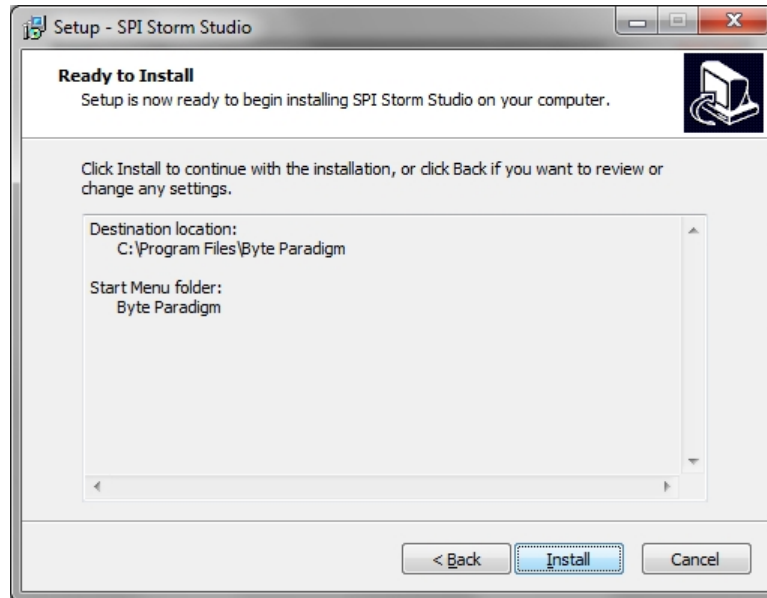
- The next screen lets you choose the 'Start Menu' folder where the SPI Storm Studio shortcuts will be installed. The folder '**Byte Paradigm**' is chosen by default. Select the destination folder and click on **Next>**



- The next screen lets you choose the destination directory on your PC hard drive. Default is: '**c:\Program Files\Byte Paradigm**'. Select the destination directory and click on **Next>**



- Finally, click in '**Install**' at the '**Ready to install**' screen.



- Once setup is complete, the final screen offers to launch SPI Storm Studio. Select the appropriate option and click on '**Finish**' to finish the software installation.



1.3 Installing the USB driver

1.3.1 Default procedure

- Connect your SPI Storm device to one free USB port of your PC with the provided cable.
- When prompted, locate and install the USB driver:
 - 32-bit operating system, the driver is located in: <Installation root>\SPIStormStudio\Drivers\x86
 - 64-bit operating system, the driver is located in: <Installation root>\SPIStormStudio\Drivers\x64

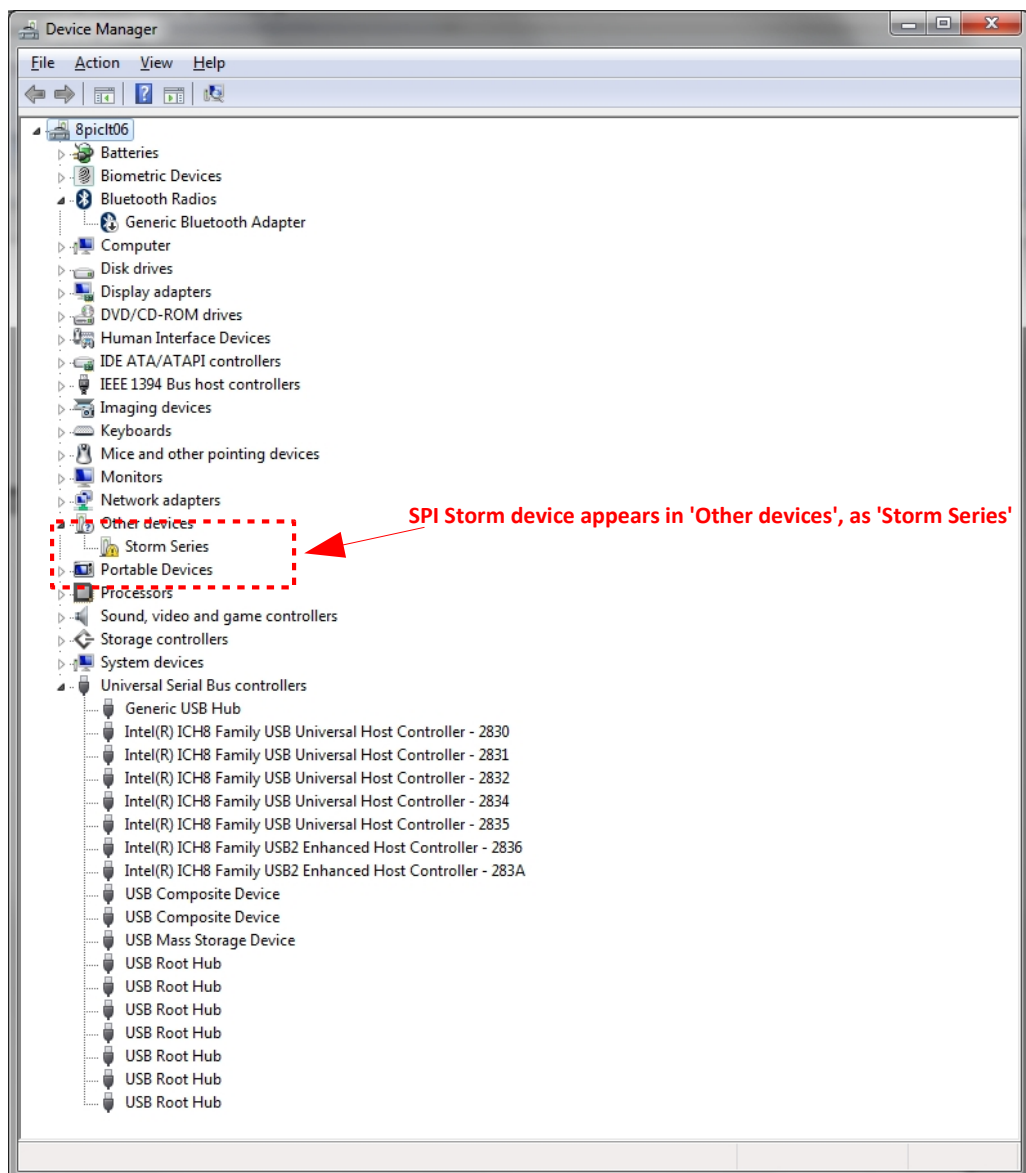
1.3.2 Install driver manually

In some cases, it might be that Windows does not prompt for driver installation when you plug your SPI Storm device.

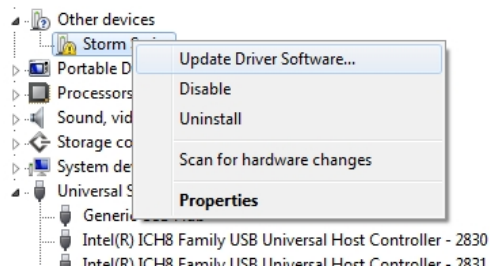
1.3.2.1 Installing driver in Windows 7

Here is how to install the driver manually:

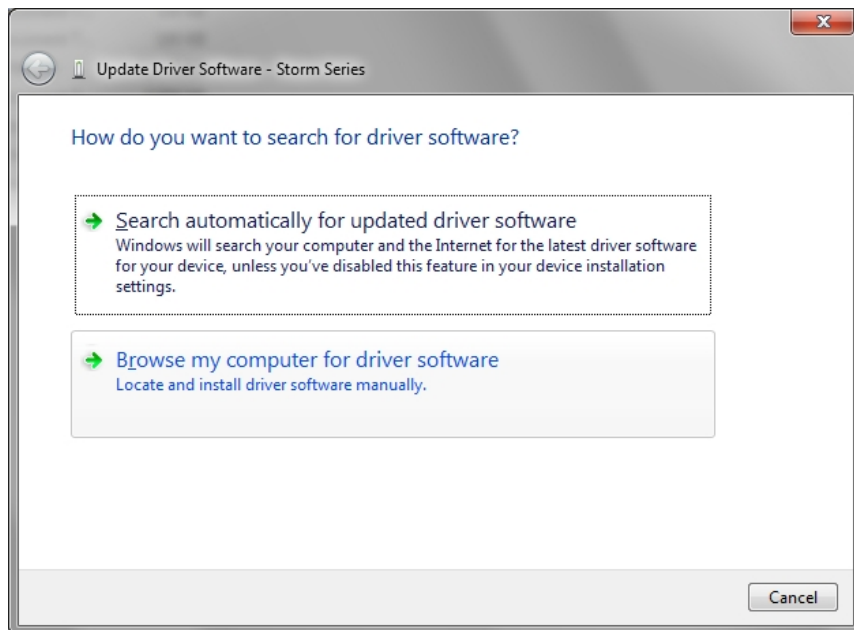
- Start Windows Device Manager and connect your SPI Storm device to a free USB port.



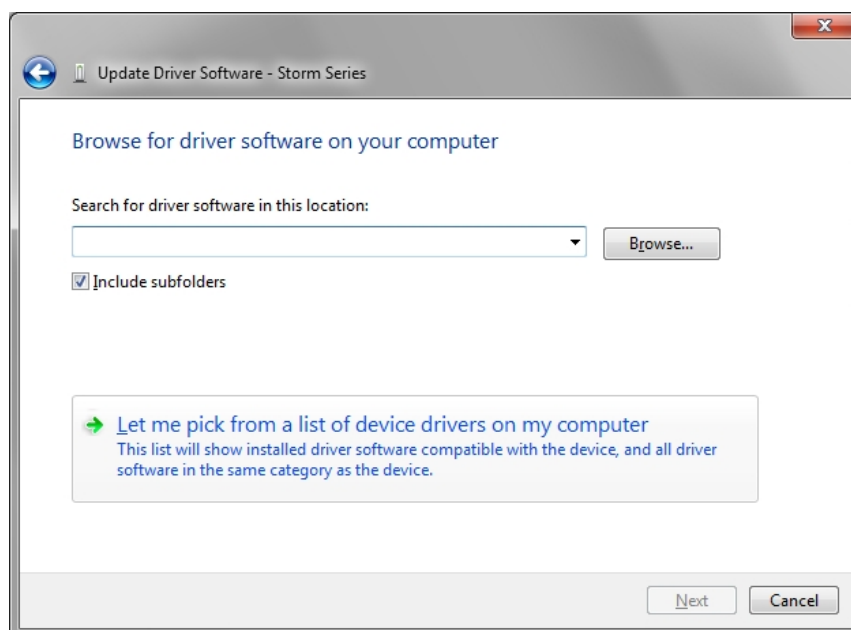
- Right click on '**Storm Device**' and click on '**Update Driver Software...**'



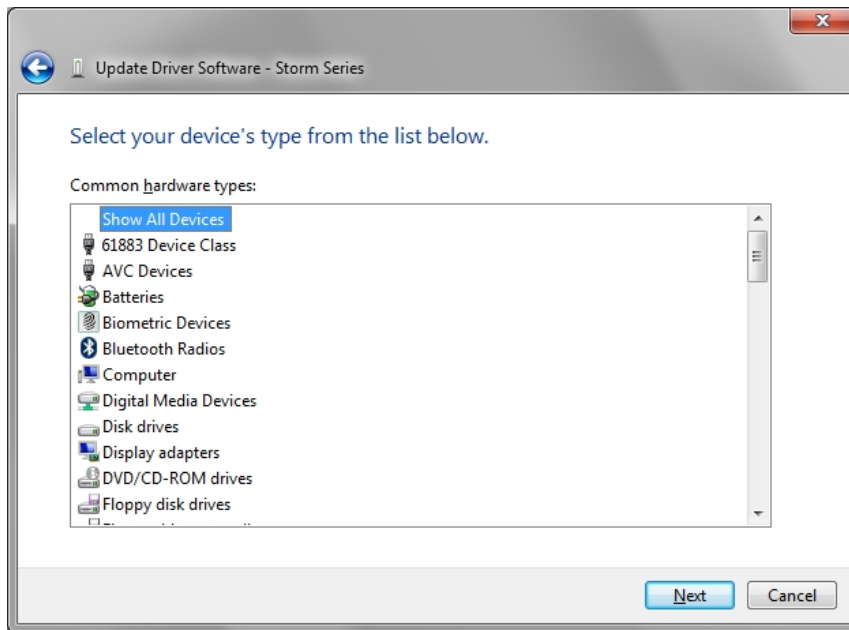
- Select '**Browse my computer for driver software**'



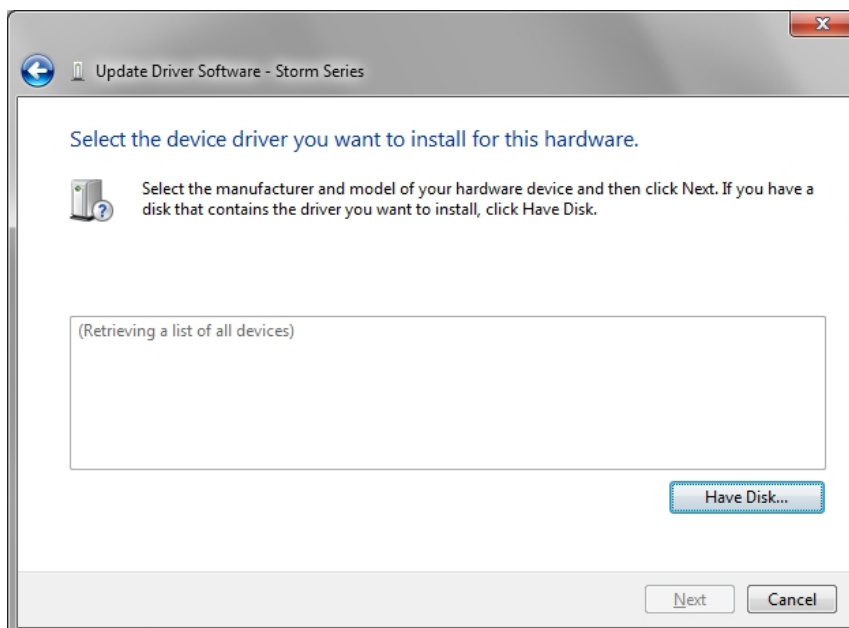
- Select '**Let me pick from a list of device drivers on my computer**' and click on '**Next**'.



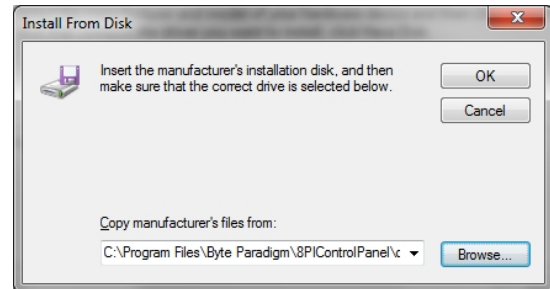
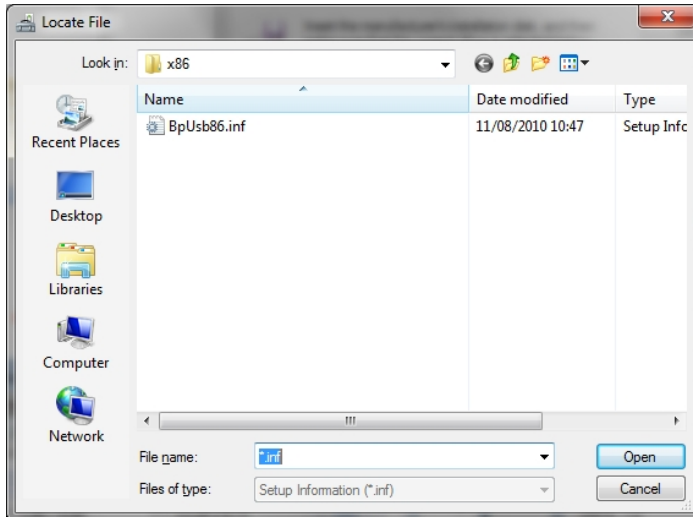
- Click on **'Next'**



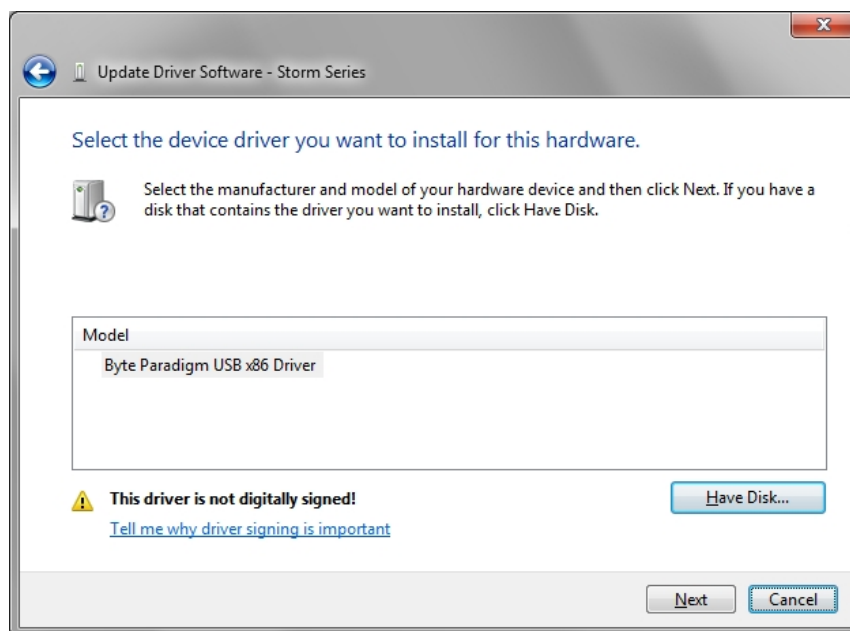
- Click on **'Have Disk...'**



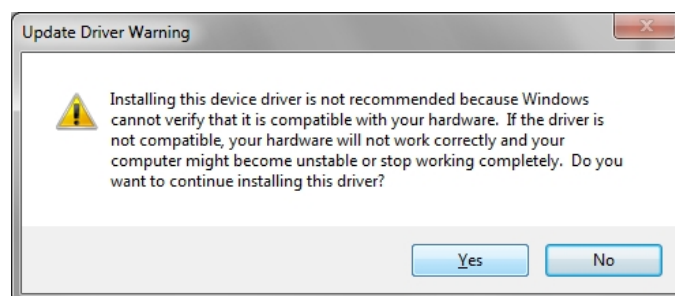
- Browse to the driver location and select the .inf file in this directory, then click on 'Open':
 - 32-bit operating system, the driver is located in: <Installation root>\SPIStormStudio\Drivers\x86
 - 64-bit operating system, the driver is located in: <Installation root>\SPIStormStudio\Drivers\x64



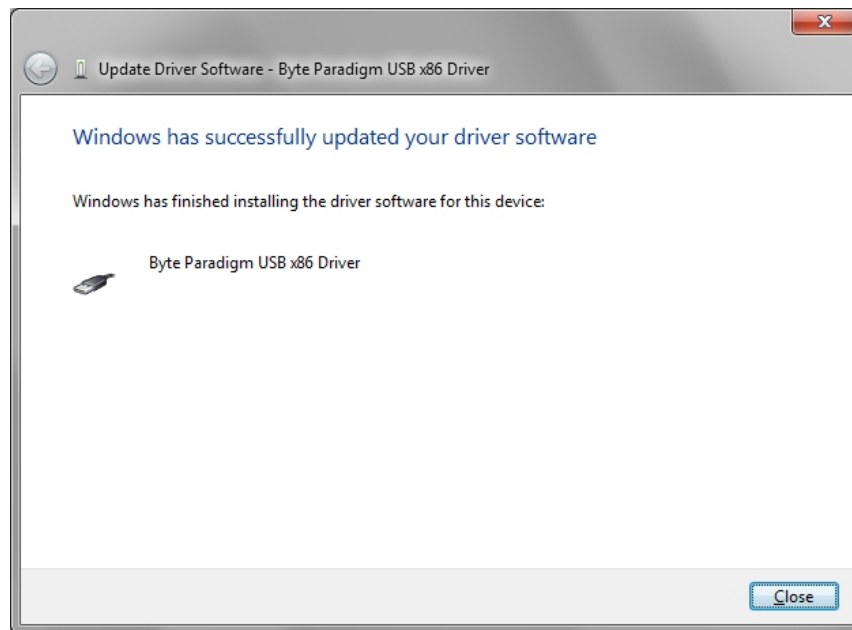
- Click on 'OK'.
- At the next screen, select the driver and click on 'Next'.



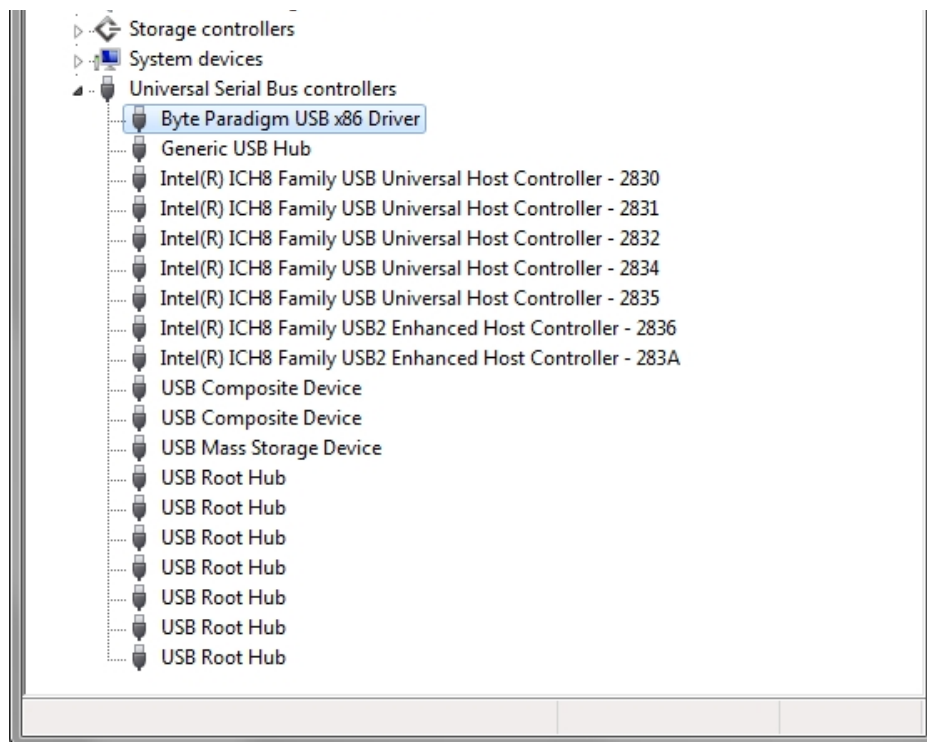
- A warning appears. Click on 'Yes'.



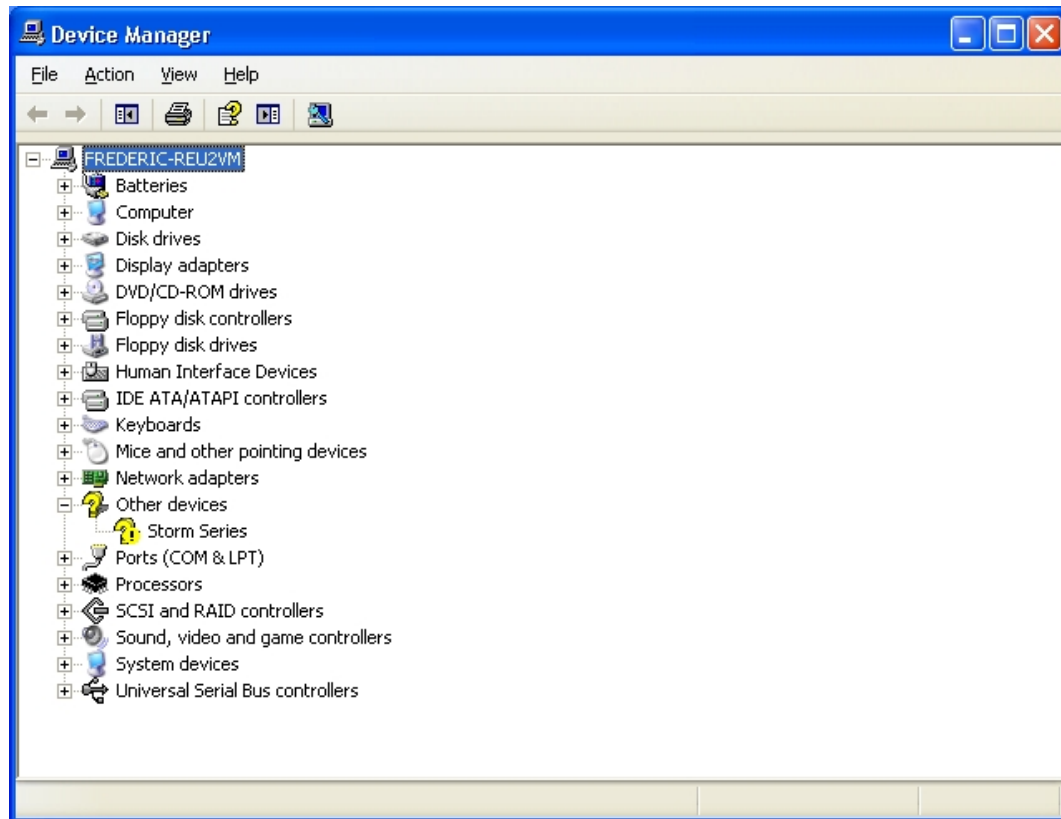
- Once the driver is installed, the following screen appears (case of 32 bit driver installed):



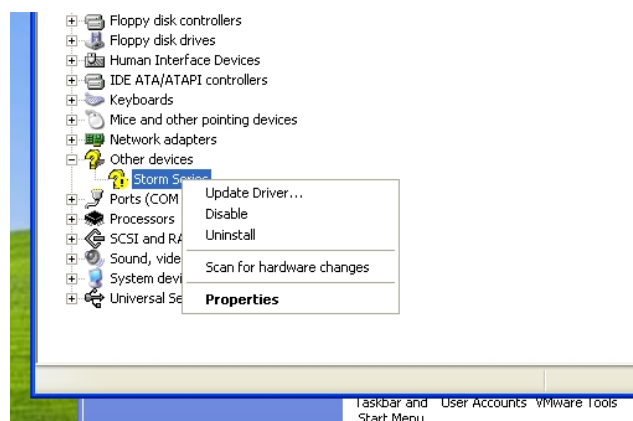
- The driver is now properly installed for SPI Storm device, as shown in the Device Manager.



1.3.2.2 Installing driver in Windows XP



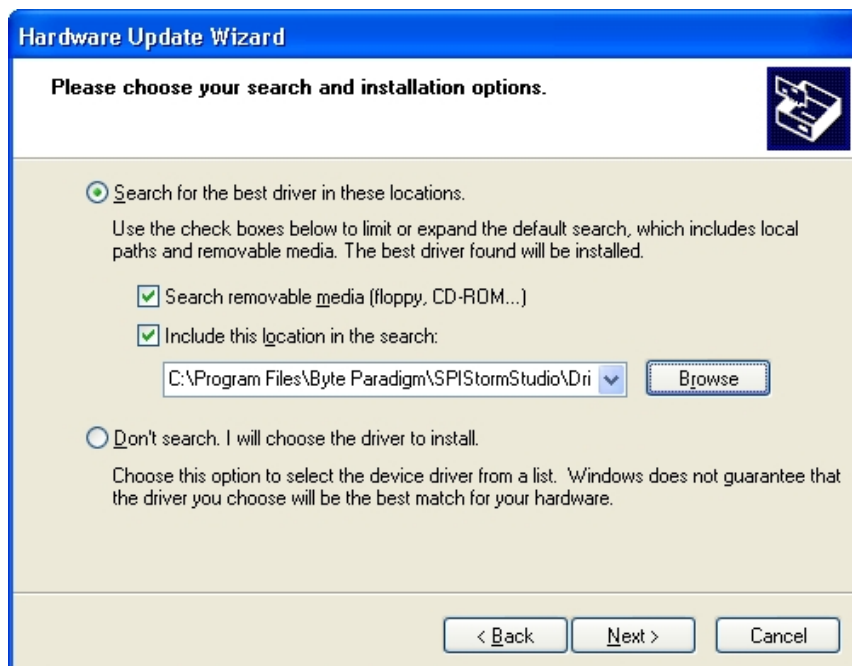
- Right click on '**Storm Series**' and select '**Update Driver**'.



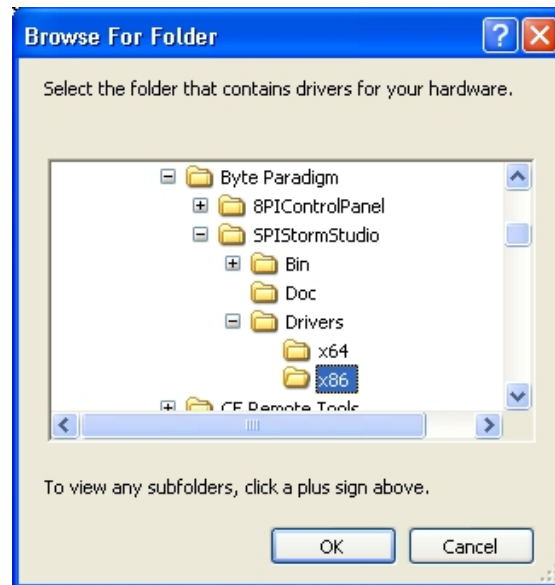
- Select 'Install from a list of specific location (Advanced)' and click on 'Next>'.



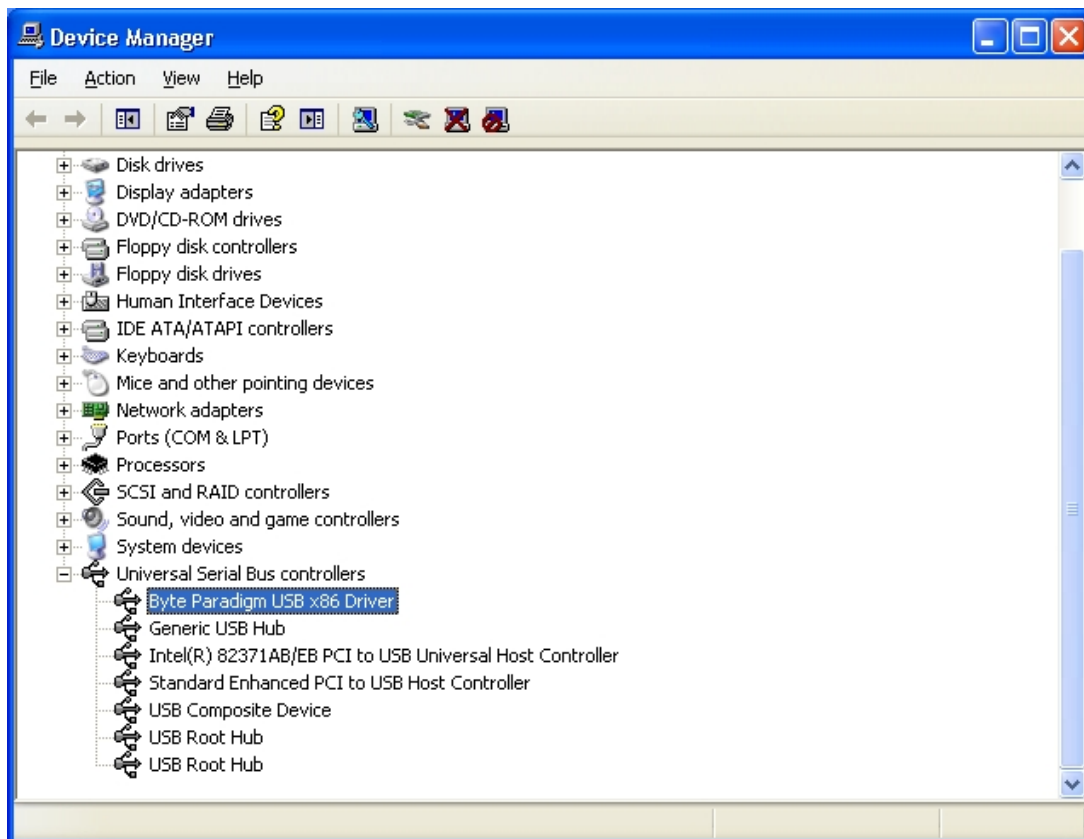
- Click on 'Browse'.



- In the browsing windows, select the driver location according to the OS used:
 - 32-bit operating system, the driver is located in: <Installation root>\SPIStormStudio\Drivers\x86
 - 64-bit operating system, the driver is located in: <Installation root>\SPIStormStudio\Drivers\x64

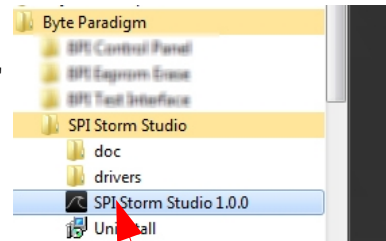
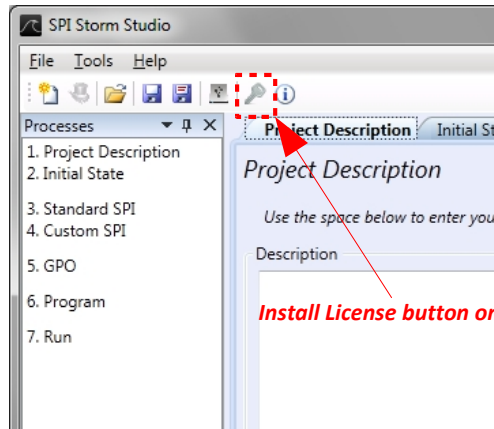


- Click on 'Ok', then 'Next>'
- The driver is now properly installed for SPI Storm device, as shown in the Device Manager (case of a 32-bit OS).

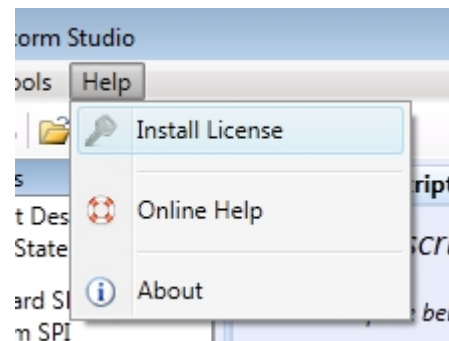


1.4 Installing the License File

- Start **SPI Storm Studio** →
- In the SPI Storm Studio main window, click on the 'install license' button from the toolbar or select **Help > Install license**

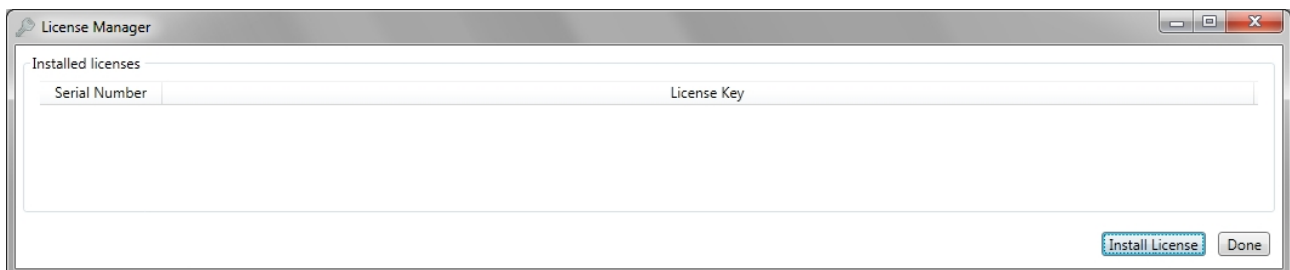


Start SPI Storm Studio from the Windows Start Menu

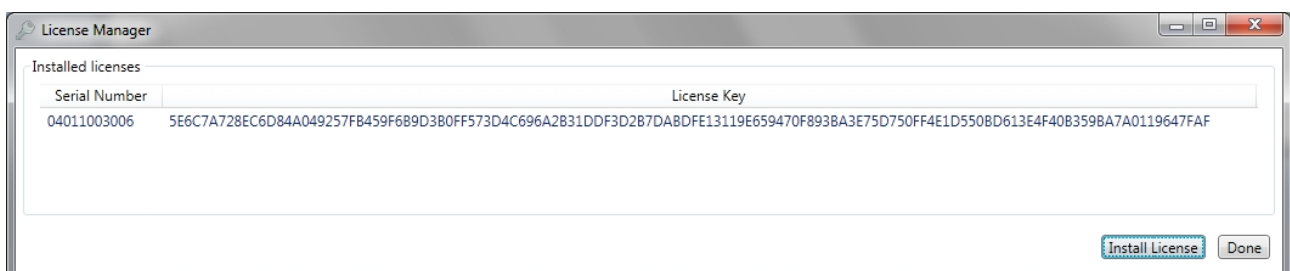


Install License from the 'Help' menu

The 'License Manager' window opens.



- Click on '**Install License**' button. A browser window opens.
 - If you have not received your license file, please go to <http://www.byteparadigm.com/download-16.html> and follow the instructions about how to receive your license file.
 - Select the received license file and click on 'Open'.
- The License Manager now lists the installed devices and the corresponding license strings.





Please note:

- Each installed device is designated with its serial number, in the '**Serial Number**' column of the License Manager.
- You can find the device serial number written on a label at the back of your SPI Storm device.
- You can install more than one device.
- When upgrading your version of SPI Storm Studio software, you need not to install the license file again.